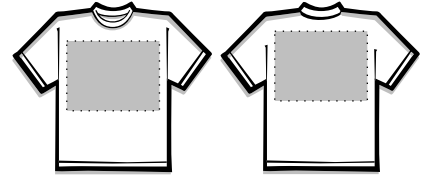
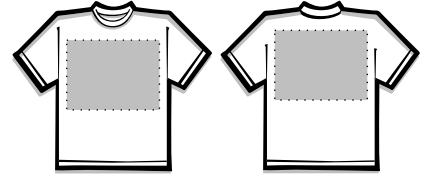


# Standard Imprint Areas

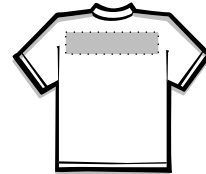
**Adult Small through Adult X-Large** (full front/full back):  
14" (wide) x 15" (high); maximum  
12" (wide) x 10" (high); standard



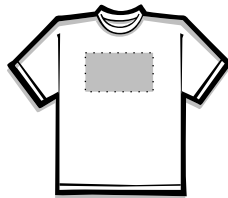
**Youth X-Small through Youth Large** (full front/full back):  
9" (wide) x 9" (high)



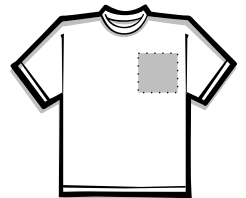
**Across Shoulders** (full back):  
Adult: 14" (wide) see full back sizes for height.  
Youth: 9" (wide) see full back sizes for height.



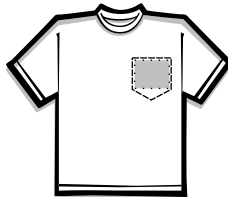
**Center Chest:**  
6" wide x 6" high



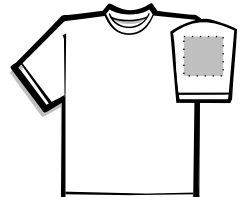
**Left Chest:**  
3.5" wide x 3.5" high



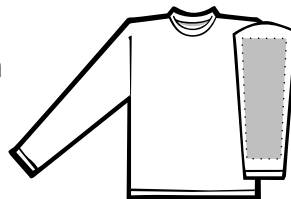
**On Pocket Print:**  
3" wide x 3" high



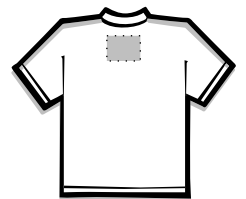
**Short Sleeve:**  
3.5" wide x 4" high



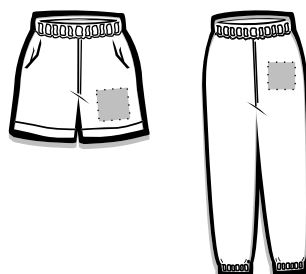
**Long Sleeve:**  
3.5" wide x 12" high



**Back Collar Tab:**  
3" wide x 3" high



**Pants/Shorts (thigh):**  
4" wide x 4" high



**Caps:**  
4" wide x 2" high

